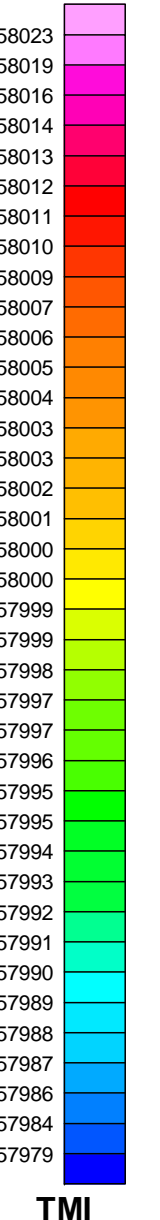
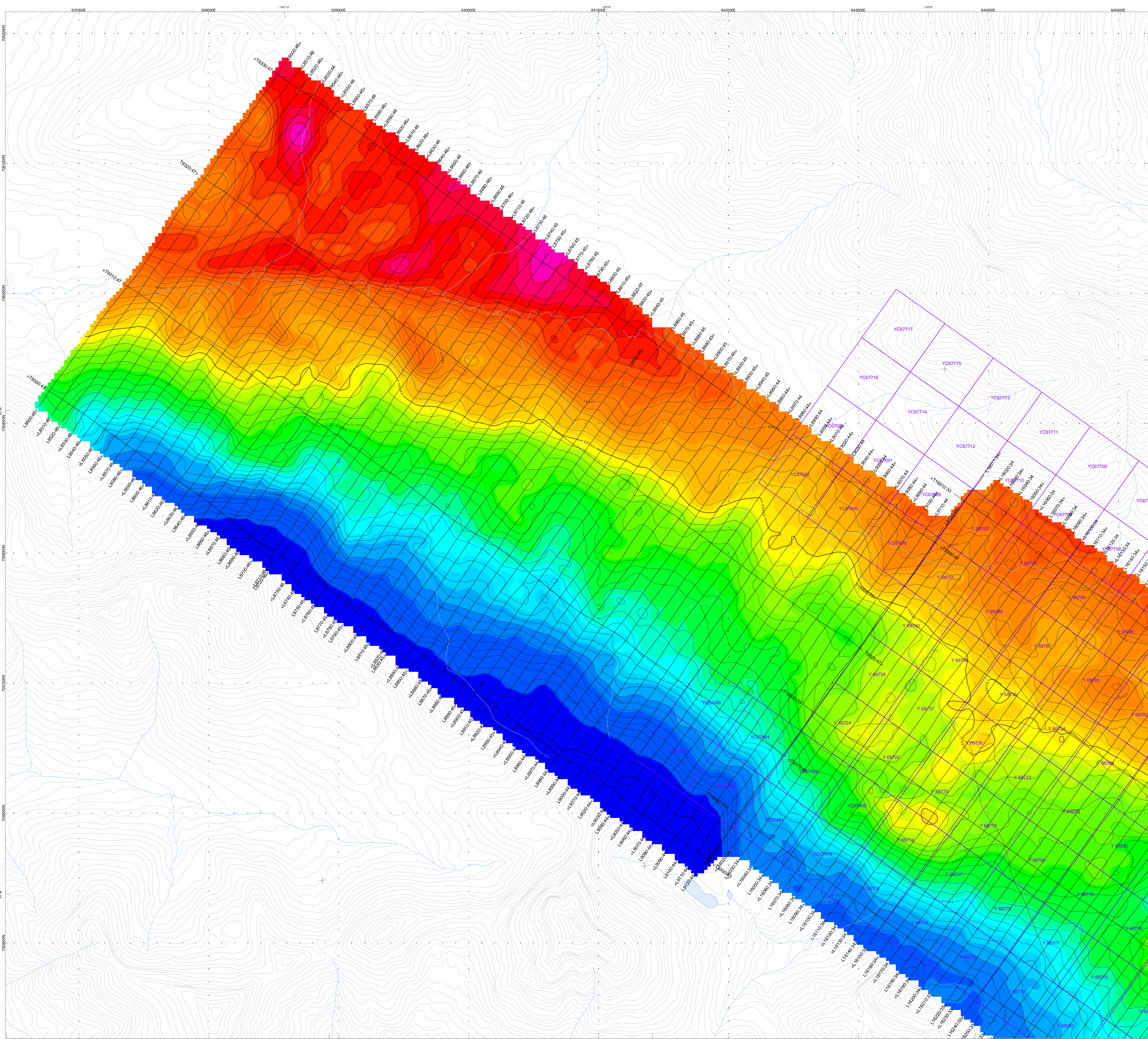


SURVEY SPECIFICATIONS:
 Survey Dates: July 16th to July 17th, 2008
 Survey Dates: July 16th to July 17th, 2008
 Aircraft: Aerostair A-Star 350 B3 (C-TRK)
 Nominal Survey Line Spacing: 100 Meters
 Nominal Survey Line Direction: N 30° E
 Nominal Tie Line Spacing: 1000 Meters
 Nominal Tie Line Direction: N 120° E
 Nominal Terrain Clearance: 75 Meters where possible
 EM Loop: Towed at a mean distance of 35 meters below the Helicopter
 Magnetic Sensor: Towed at a mean distance of 13 meters below the Helicopter

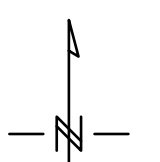
INSTRUMENTS:
 Geotech Time Domain Electromagnetic System (VTEM)
 Concentric RefTx Geometry
 Transmitter Loop: Diameter 26 Meters, Base Frequency 30 Hz
 Dipole Moment: 556,400 nA
 Transmitter Wave Form: Trapezoidal, Pulse Width 4.2 ms
 Geometrics High Sensitivity Cesium Magnetometer
 Mag Resolution: 0.02 nT at 10 samples/sec

MAP PROJECTIONS:
 Datum: NAD 83
 Projection: Universal Transverse Mercator
 Central Meridian: 132°W (Zone 8)
 Central Scale Factor: 0.9996
 False Easting/Northing: 500,000m/0m
 Map Axis: 6378137.200
 Eccentricity: 0.081819191
 NTS: 105N09, 105D12



Contour Interval (nT):
 5

TOPOGRAPHIC LEGEND:
 Roads
 Trails
 Contours
 Rivers & Streams
 Lakes
 Wetlands
 Mining Rights



Scale 1:10000
 (meters)
 100 0 100 200 300 400 500
 NAD83 / UTM zone 8N

The topographic data base was derived from 1:50,000 NRC (Natural Resources Canada) NTDB data.
 Background shading is derived from NASA SRTM (Shuttle Radar Topography Mission) data.
 Inset data derived from Geometrics 1:250,000 Canadian National Topographic database.
 Mineral Exploration Licences & Mining Claims are derived from the Government of Yukon, Geomatics Branch.
 (http://geomatics.yukon.ca/data_download.html)

Archer Cathro & Associates Ltd.
 Plata Block - West
 Keno Hill Area - Yukon
 Geotech VTEM System

TOTAL MAGNETIC INTENSITY (TMI)

Flown and processed by Geotech Ltd.
 245 Industrial Parkway North,
 Aurora, Ontario, Canada L4G 4C4
 www.geotech.ca
 February 2009